

PLEASE CHECK WWW.MOLEX.COM FOR LATEST PART INFORMATION

Part Number: [0355271015](#)
Status: **Active**
Description: 6.35mm (.250") Pitch, Wire-to-Wire Housing, Female 10 Circuits

Documents:

[Drawing \(PDF\)](#) [RoHS Certificate of Compliance \(PDF\)](#)
[Product Specification PS-35527-001 \(PDF\)](#)

General

| | |
|----------------|-----------------------|
| Product Family | Crimp Housings |
| Series | 35527 |
| Product Name | N/A |

Physical

| | |
|-------------------------------|--------------------|
| Breakaway | No |
| Circuits (maximum) | 10 |
| Color - Resin | Natural |
| Gender | Receptacle |
| Glow-Wire Compliant | No |
| Keying to Mating Part | N/A |
| Lock to Mating Part | None |
| Material - Resin | Polypropylene |
| Number of Rows | 2 |
| Packaging Type | Bag |
| Panel Mount | No |
| Pitch - Mating Interface (in) | 0.236 In, 0.386 In |
| Pitch - Mating Interface (mm) | 6.00 mm, 9.80 mm |
| Pitch - Term. Interface (in) | 0.236 In, 0.386 In |
| Pitch - Term. Interface (mm) | 6.00 mm, 9.80 mm |
| Polarized to Mating Part | Yes |
| Ports | 1 |
| Stackable | No |
| Temperature Range - Operating | -40°C to +120°C |

Material Info

Reference - Drawing Numbers

| | |
|-----------------------|--------------|
| Product Specification | PS-35527-001 |
| Sales Drawing | SD-35527-001 |

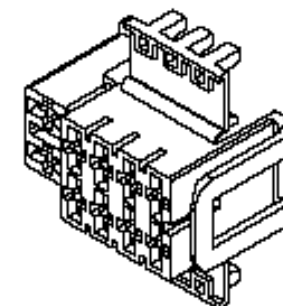


image - Reference only

Series

EU RoHS

**ELV and RoHS
Compliant**
REACH SVHC
 Not Reviewed
**Halogen-Free
Status**
 Not Reviewed

China RoHS



**Need more information on product
environmental compliance?**

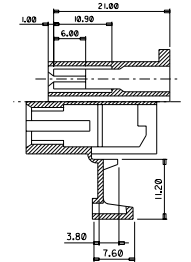
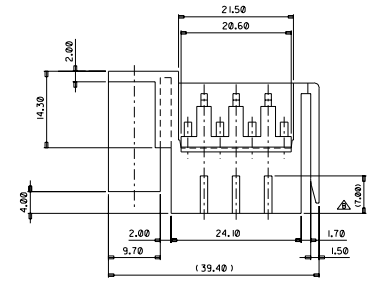
Email productcompliance@molex.com
 For a multiple part number RoHS Certificate of
 Compliance, [click here](#)

Please visit the [Contact Us](#) section for any
 non-product compliance questions.

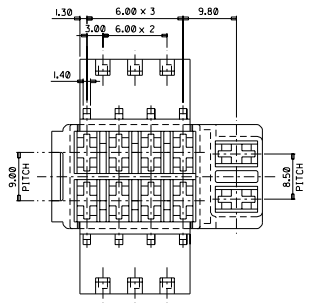
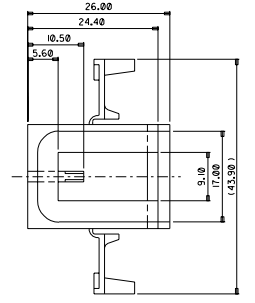
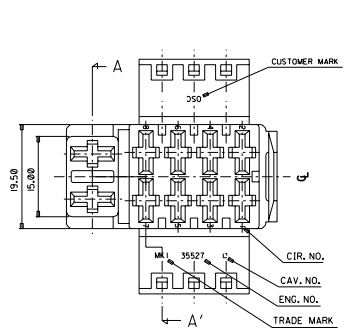
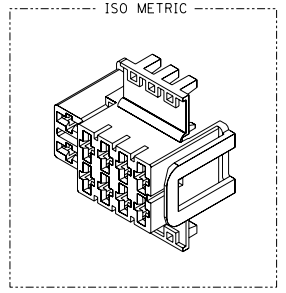
Search Parts in this Series
[35527Series](#)

Use With
[90021](#)

DWG. NO. SD-35527-001
 PROJECT NO.
 SIMILAR ITEM
 DO NOT SCALE DRAWING DIMENSION IN METRIC



SECTION: A-A'



NOTE

1. MATERIAL : P.P , COLOR : GRAY
2. APPLICABLE TERMINAL(.250 TYPE) : 90021-....

| | | | | | | | | | | | |
|-----------------------------------------------------------------------------------------------------------------------------------|----------------------------------|---------------------------------------------------------|------|--------------|----------------------------------------|---------------------------|------------------------------------|----|-----------|------|------|
| REVISED EC. NO. XPR002-0/41 DRAWING. M.K.M 02/05/07 CHK. H.C. PHO APPROV. W.LEE | DESCRIPTION MAJOR CRITICAL | GENERAL TOLERANCES: (UNLESS SPECIFIED): | | SCALE | DESIGN UNITS | THIRD ANGLE PROJECTION | DIMENSIONS: | | | SHT | REV |
| | | 4 PLACES | ±0. | ±. | mm | | INCH | mm | INCH | mm | ONLY |
| C | REV | 3 PLACES | ±0. | ±. | DRAWN BY & DATE B.C.YOON 97/04/04 | | TITLE: .250 REC. HSG 10P | | | | |
| | | 2 PLACES | ±0. | ±. | CHECKED BY & DATE B.K.CHOI 97/04/04 | | | | | | |
| | | 1 PLACE | ±0.3 | ±. | APPROVED BY & DATE C.W.LEE 97/04/04 | | MOLEX INCORPORATED | | | | |
| | | ANGULAR: ± ° | | CAD FILENAME | | MATERIAL NO. | DRAWING NO. | | SHEET NO. | | |
| | | DRAFT WHERE APPLICABLE MUST REMAIN WITHIN DIMENSIONS | | SD35527.DGN | | SEE TABLE | SD-35527-001 | | 1/1 | | |
| THIS DRAWING CONTAINS INFORMATION THAT IS PROPRIETARY TO MOLEX INCORPORATED AND SHOULD NOT BE USED WITHOUT WRITTEN PERMISSION. | | | | | | | | | | SIZE | B |

